

Figure 32: Along stream average summer TN concentrations over the simulation period at design flow

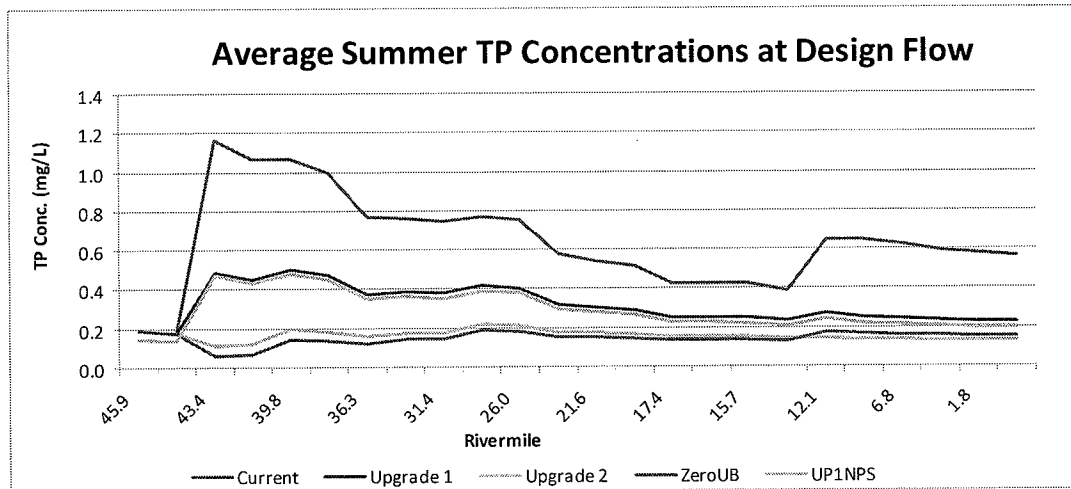


Figure 33: Along stream average summer TP concentrations over the simulation period at design flow

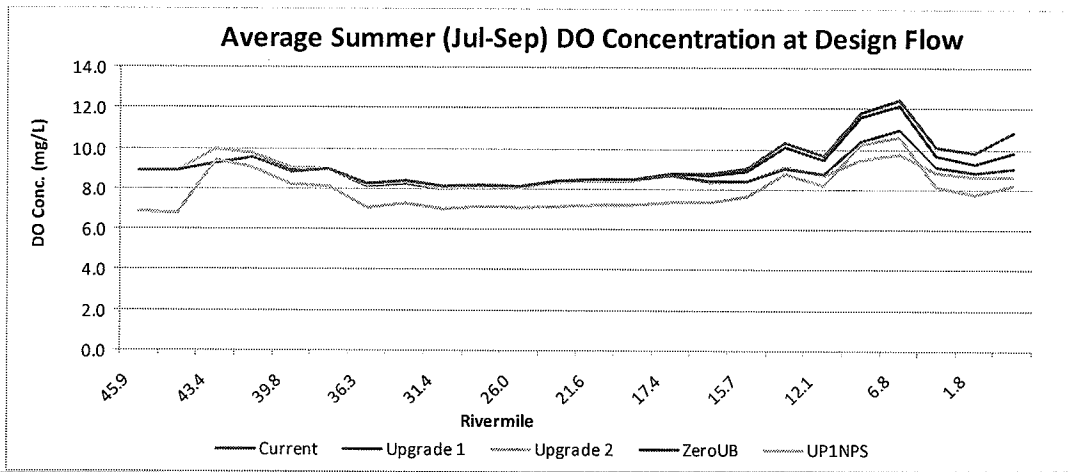


Figure 34: Along stream average summer DO concentrations over the simulation period at design flow

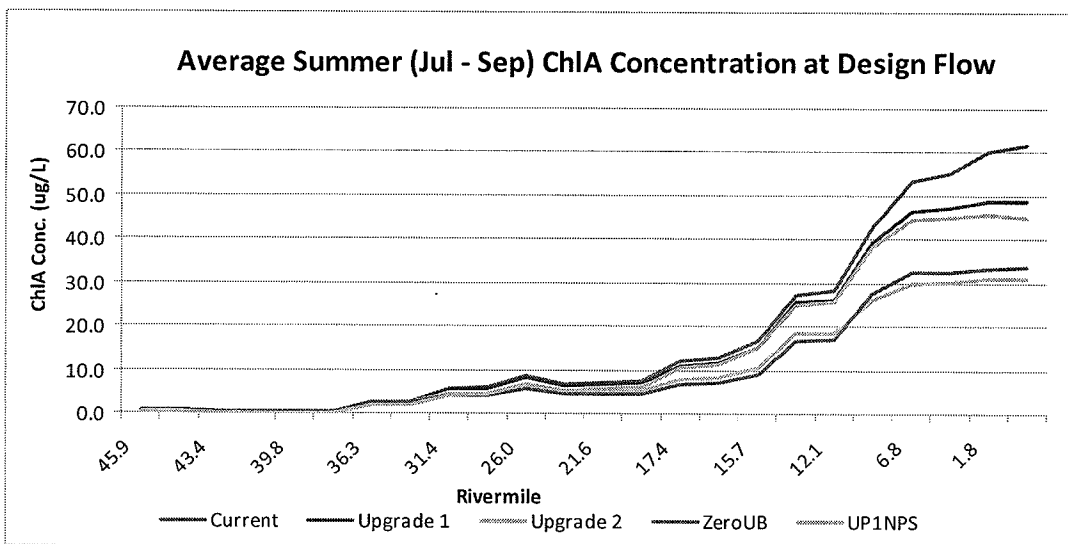


Figure 35: Along stream average summer Chl-a concentrations over the simulation period at design flow

Appendix C: Along stream annual average concentrations, actual flow regime

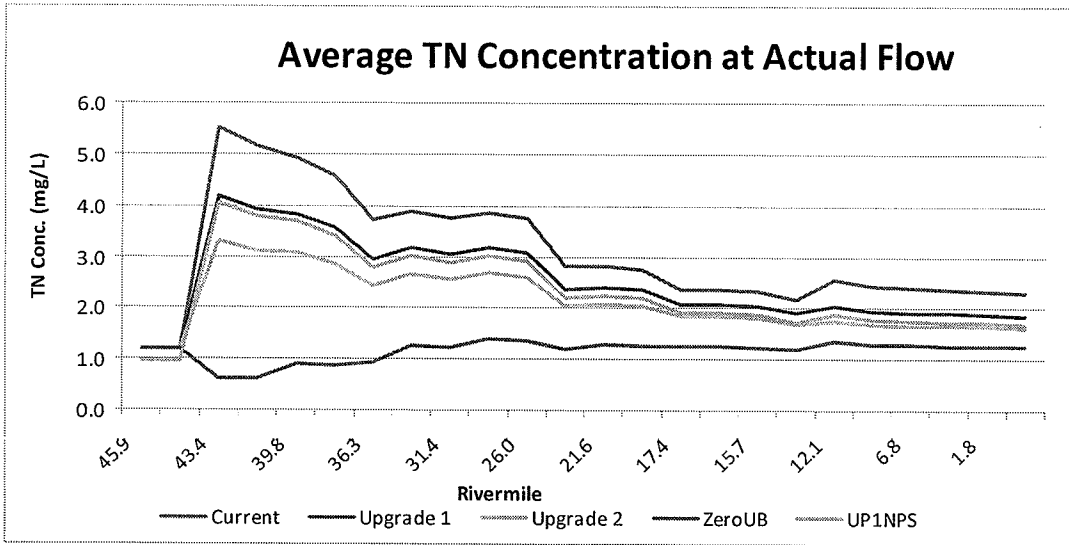


Figure 36: Along stream average year round TN concentrations over the simulation period at actual flow

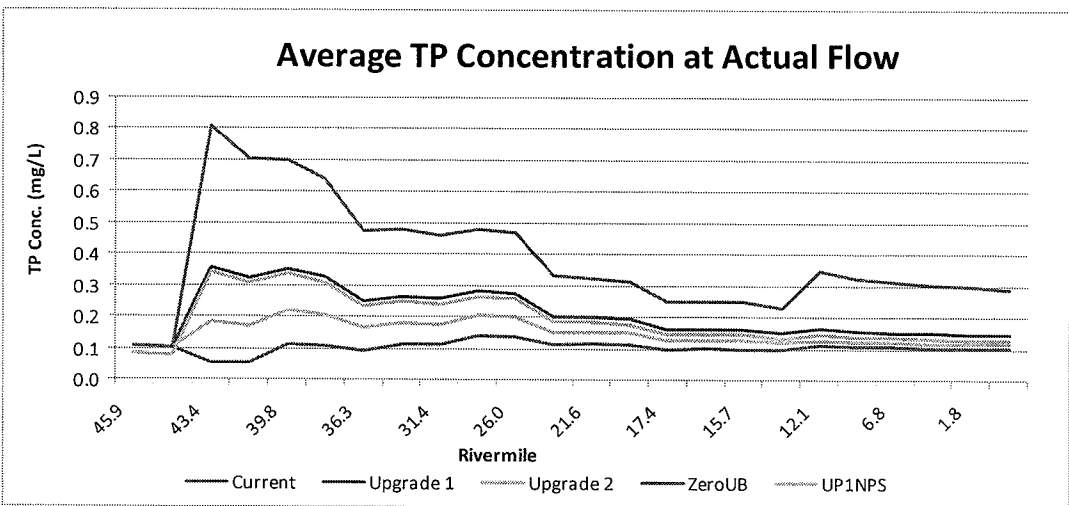


Figure 37: Along stream average year round TP concentrations over the simulation period at actual flow

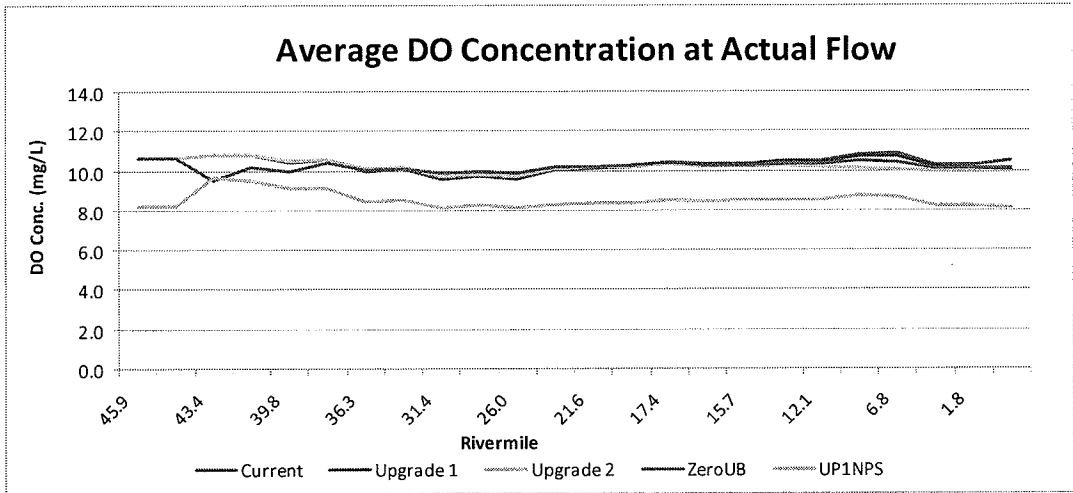


Figure 38: Along stream average year round DO concentrations over the simulation period at actual flow

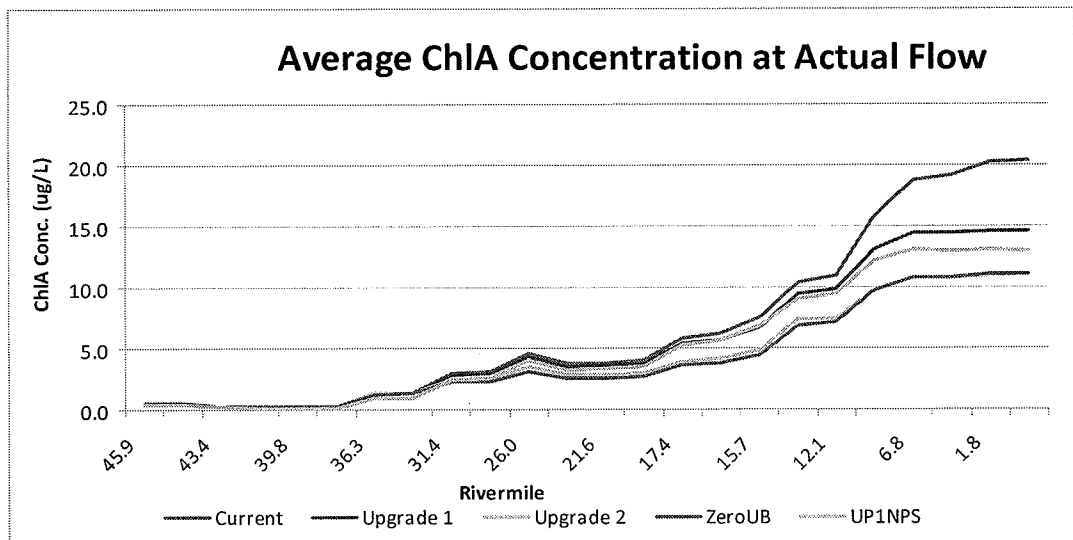


Figure 39: Along stream average year round Chl-a concentrations over the simulation period at actual flow

Appendix D: Along stream annual average concentrations, design flow regime

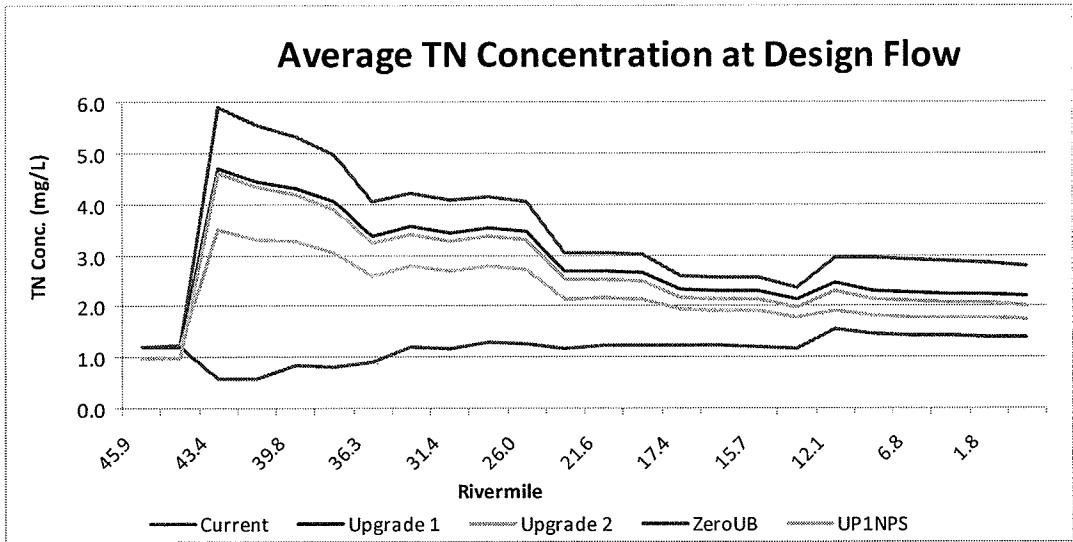


Figure 40: Along stream average year round TN concentrations over the simulation period at design flow

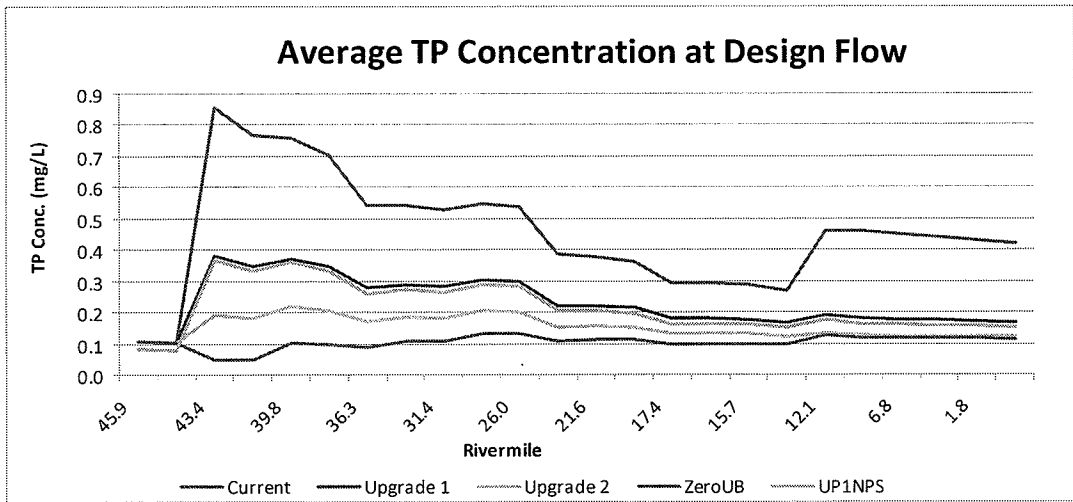


Figure 41: Along stream average year round TP concentrations over the simulation period at design flow

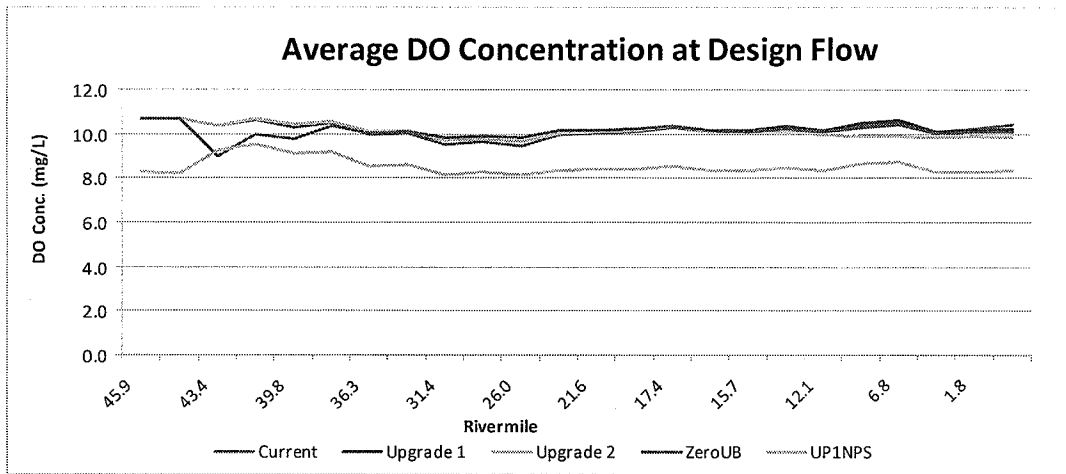


Figure 42: Along stream average year round DO concentrations over the simulation period at design flow

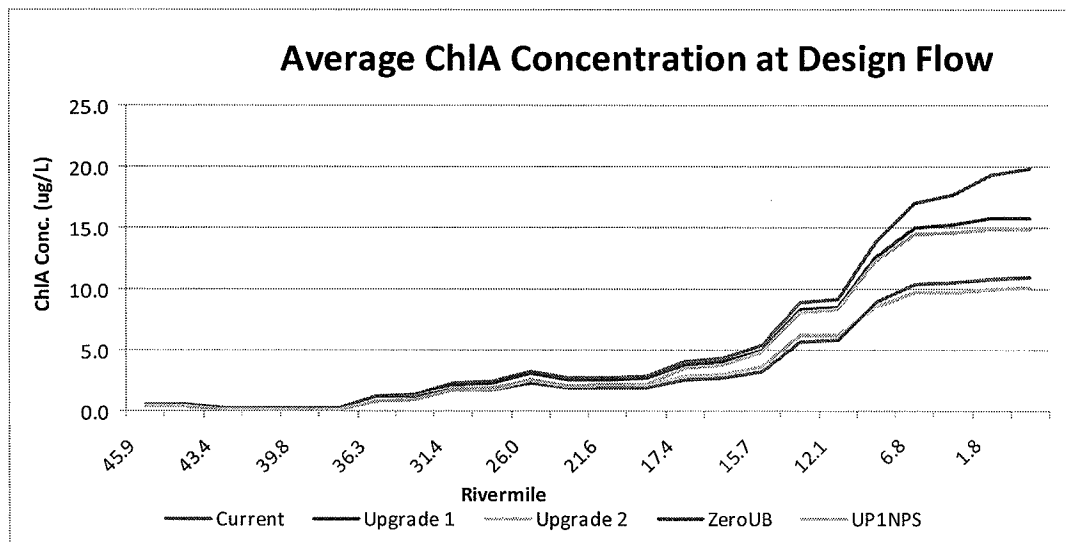


Figure 43: Along stream average year round Chl-a concentrations over the simulation period at design flow

Appendix E: Additional CDF Figures for the Actual Flow Regime

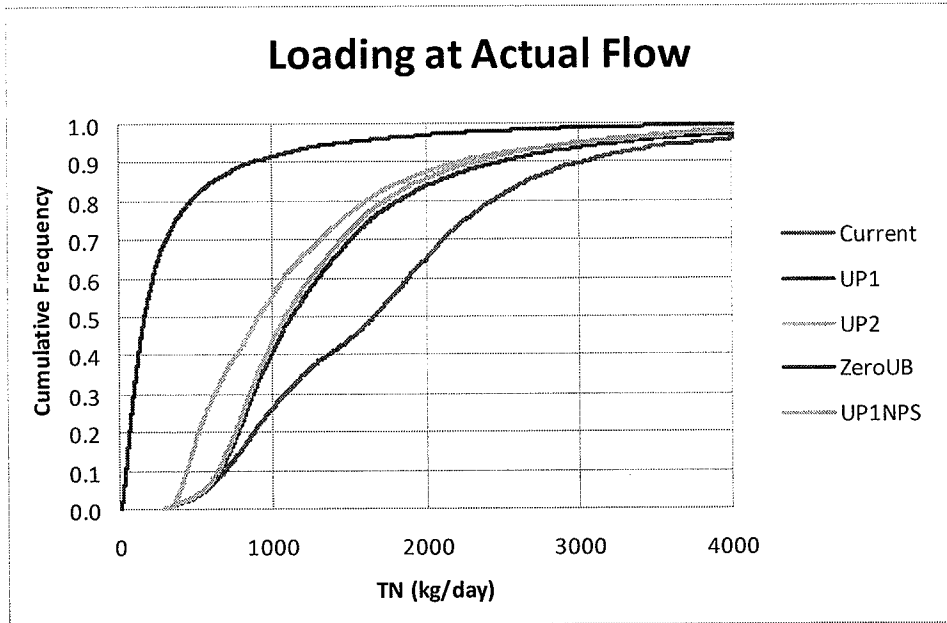


Figure 44: Cumulative frequency distribution for daily TN load under the actual flow regime at Millbury

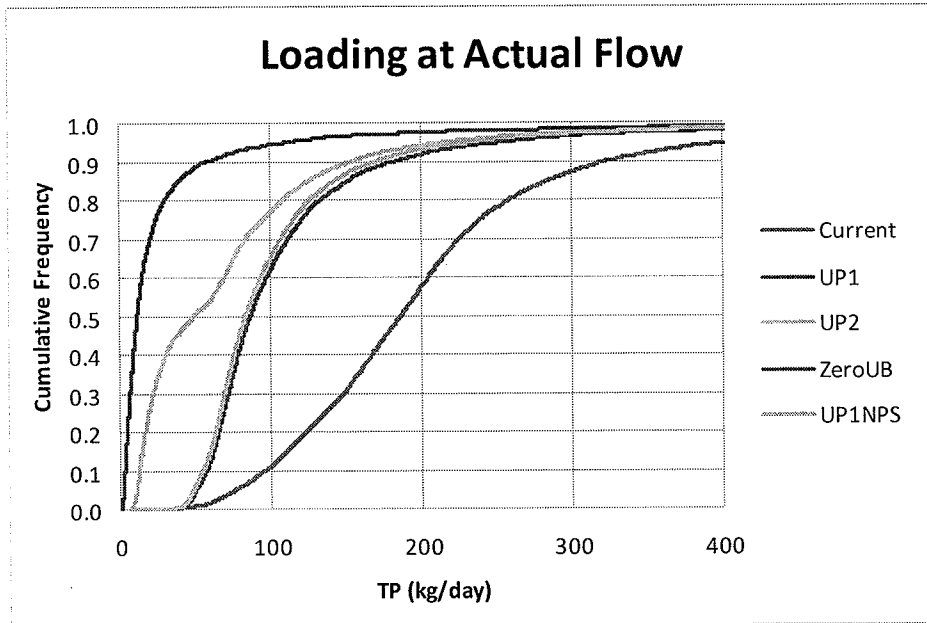


Figure 45: Cumulative frequency distribution for daily TP load under the actual flow regime at Millbury

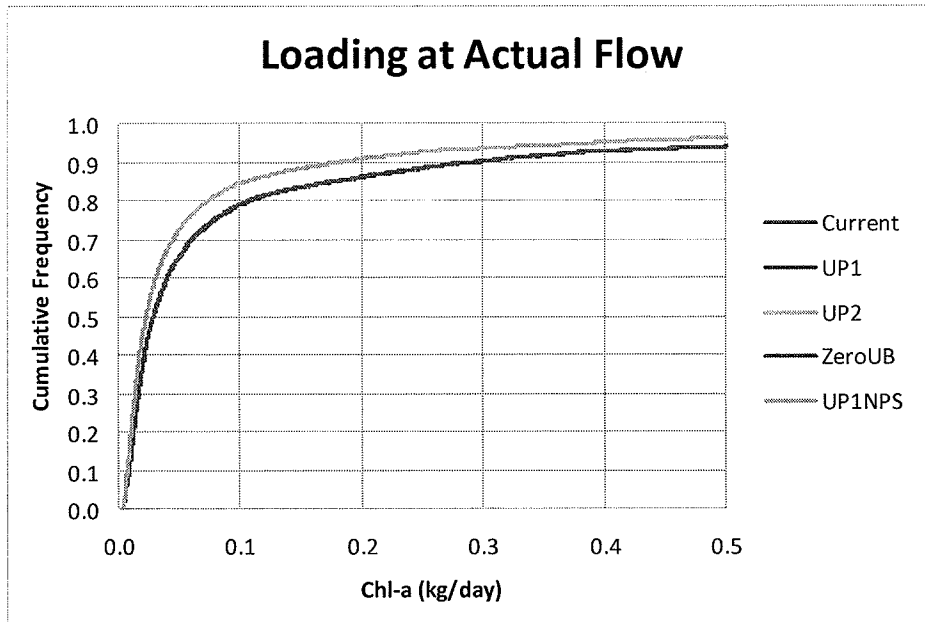


Figure 46: Cumulative frequency distribution for daily Chl-a load under the actual flow regime at Millbury

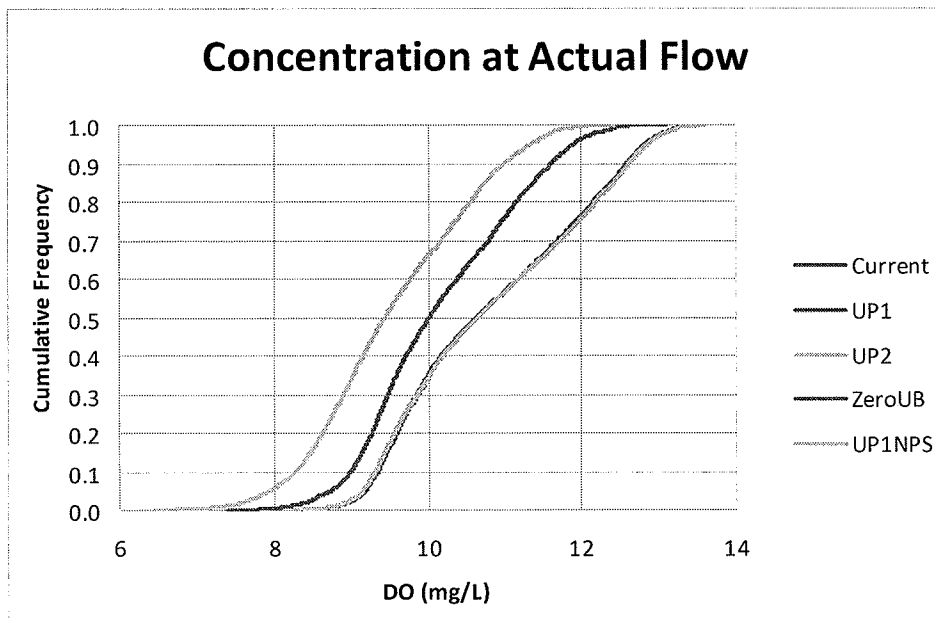


Figure 47: Cumulative frequency distribution for average daily DO concentration under the actual flow regime at Millbury

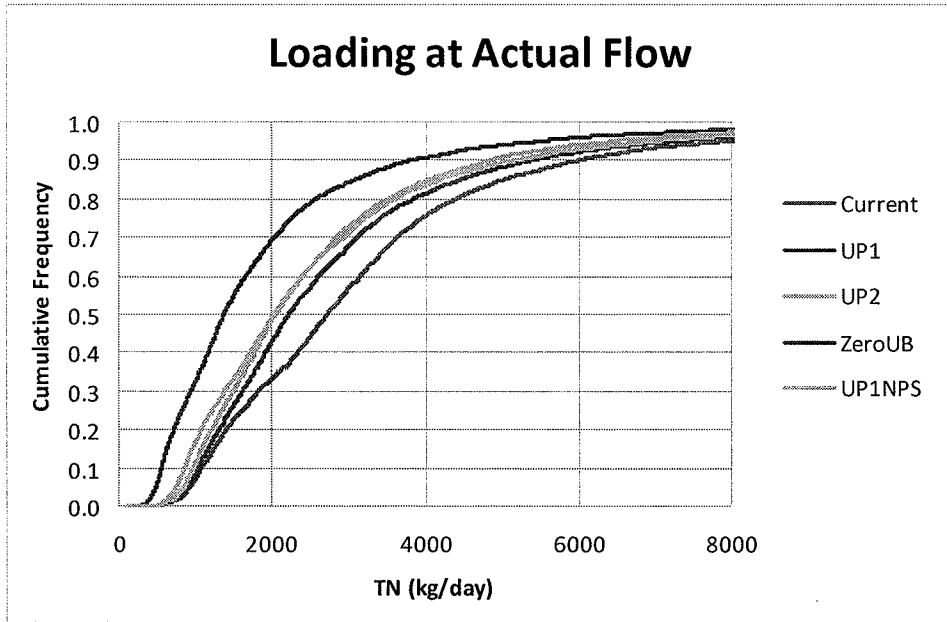


Figure 48: Cumulative frequency distribution for daily TN load under the actual flow regime at the MA/RI border

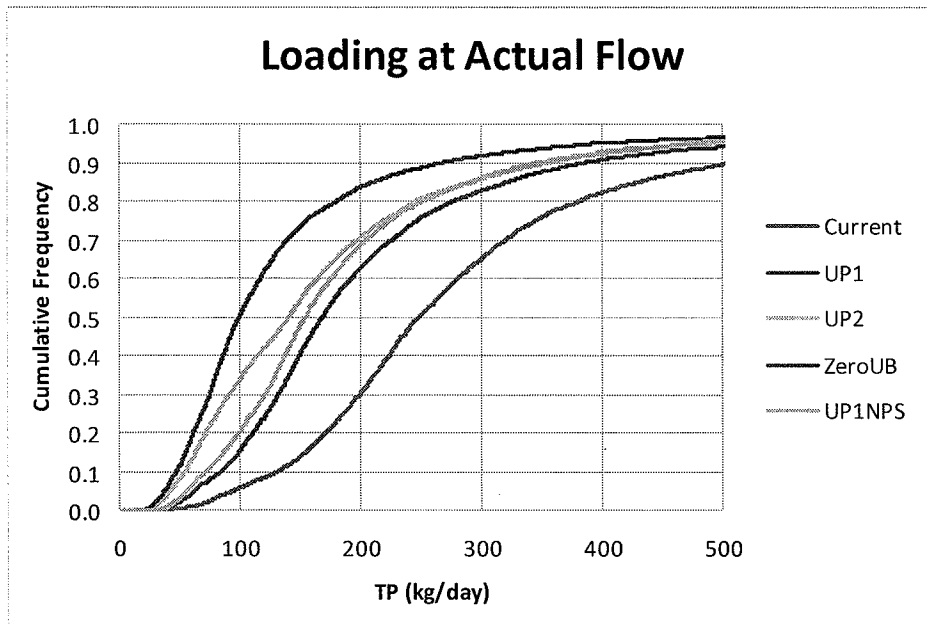


Figure 49: Cumulative frequency distribution for daily TP load under the actual flow regime at the MA/RI border

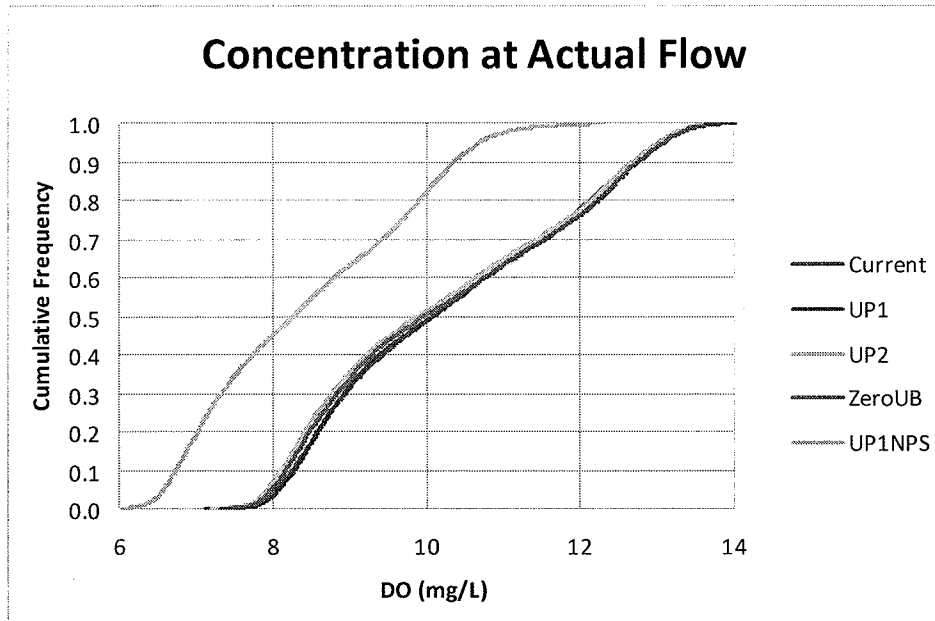


Figure 50: Cumulative frequency distribution for average daily DO concentration under the actual flow regime at the MA/RI border

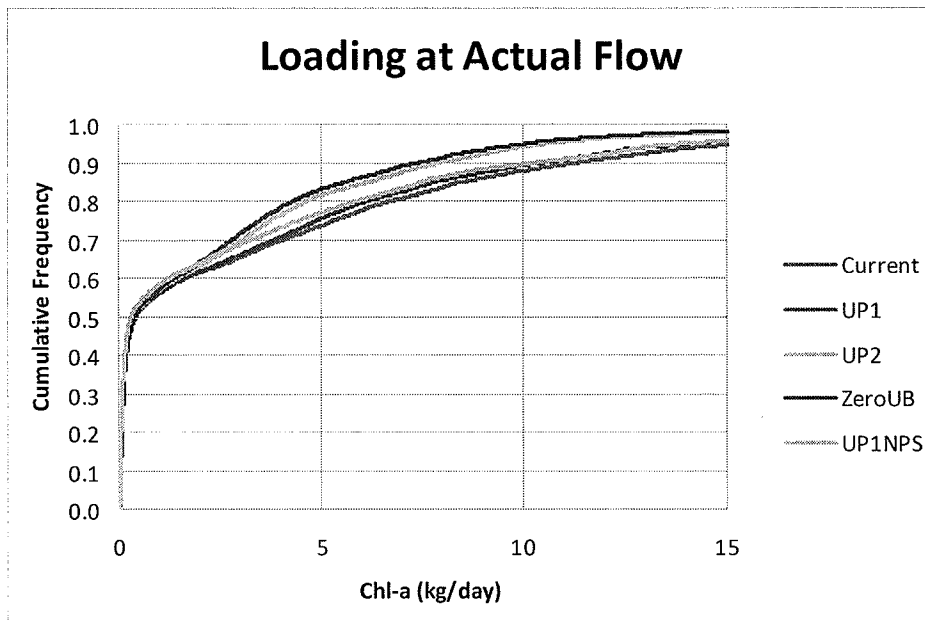


Figure 51: Cumulative frequency distribution for daily Chl-a load under the actual flow regime at the MA/RI border

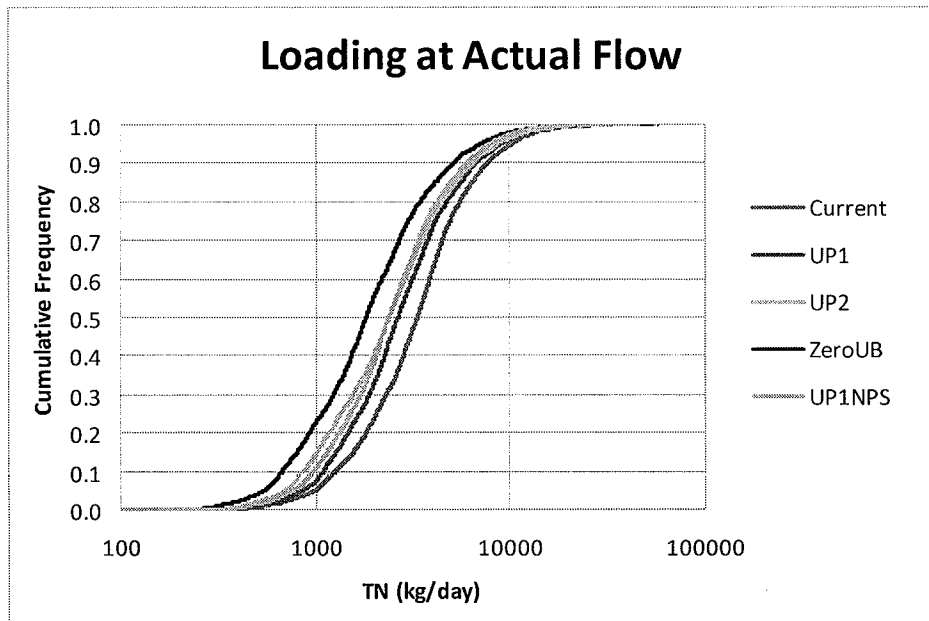


Figure 52: Cumulative frequency distribution for daily TN load under the actual flow regime at the basin outlet

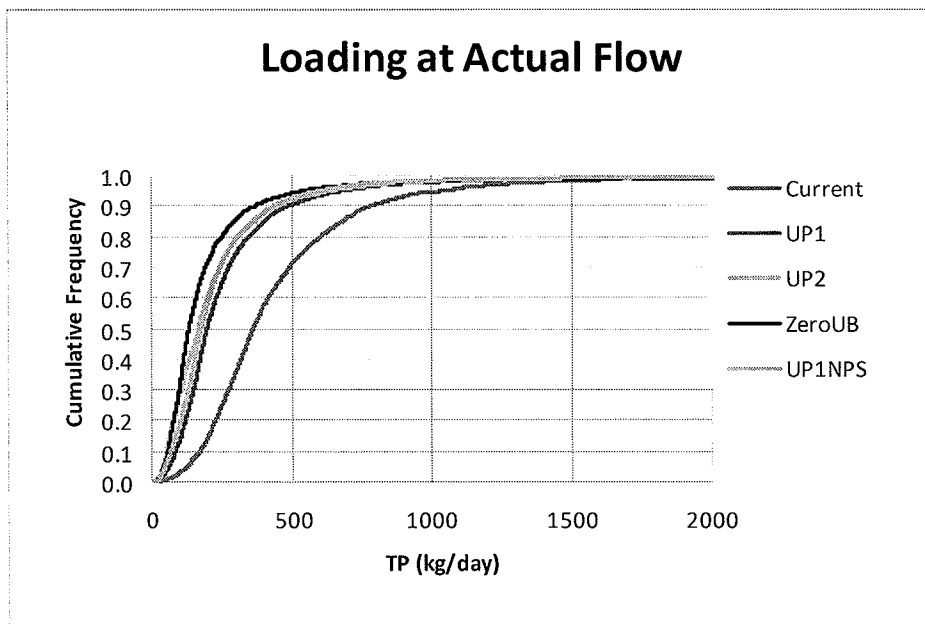


Figure 53: Cumulative frequency distribution for daily TP load under the actual flow regime at the basin outlet